



## Why Educational Travel to Japan?

### Key Highlights of Unique Appeal:

- ✓ **Safe and Secure** Environment
- ✓ **High-quality and Diverse** Education
- ✓ **Rich, Diverse and Unique** Learning Opportunities
- ✓ Rich in **Culture, History, and Stunning Natural Scenery**

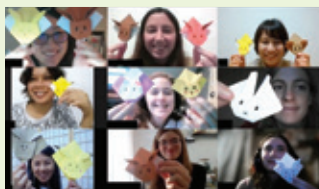
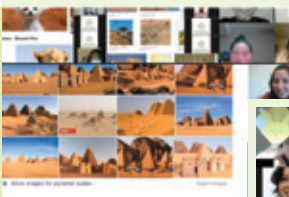


## Unique Features of KTC Study Tour

- ✓ Over 50 years of experience in the education industry  
KTC guarantees a tour with educational benefits
- ✓ Activities that reflect a good balance of **STEAM** elements
- ✓ **School exchange** with KTC Group Inhouse School
- ✓ Pre-departure **Online School/Student Exchange**



## Online Student Exchange before Departure



Contacting your buddy online before your trip, **Doubles the excitement of meeting him or her in person when you visit Japan.**

### Opportunities for Mutual Exchange!

Learn about each other's history, culture, traditions, and way of life through exchange.

### Interactive Learning Opportunity!

Engage in Hands-on activities like Origami, Anime Discussion, Language Exchange.



## Sample Itinerary

### DAY 1 HIROSHIMA

Arrive at Hiroshima via Tokyo

**School Exchange 1**  
Meet **Buddy**



**Peace Memorial Park and Museum**

### DAY 2 OSAKA

**Bullet Train Ride Experience**  
Hiroshima to Osaka



**Osaka Castle**



**School Exchange 2**

**Buddy with Cultural Experience**



### DAY 3 KYOTO

**Kinkakuji Temple**  
UNESCO World Heritage Site



**Fushimi Inari Shrine**



### DAY 4 TOKYO

**Miraikan**  
The Museum of Emerging Science and Innovation



**Odaiba Statue of Liberty**



**Robotics Experience**

**Shibuya Crossing**



### DAY 5 TOKYO

**Asakusa Sensoji Temple**  
Nakamise Shopping Street



**Language and cultural experience**



**Manga Workshop**



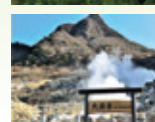
### DAY 6 MT. FUJI

**Mt. Fuji 5th Station**



**Owakudani**

**Hakone Ropeway**



**Hakone Sightseeing Cruise**

